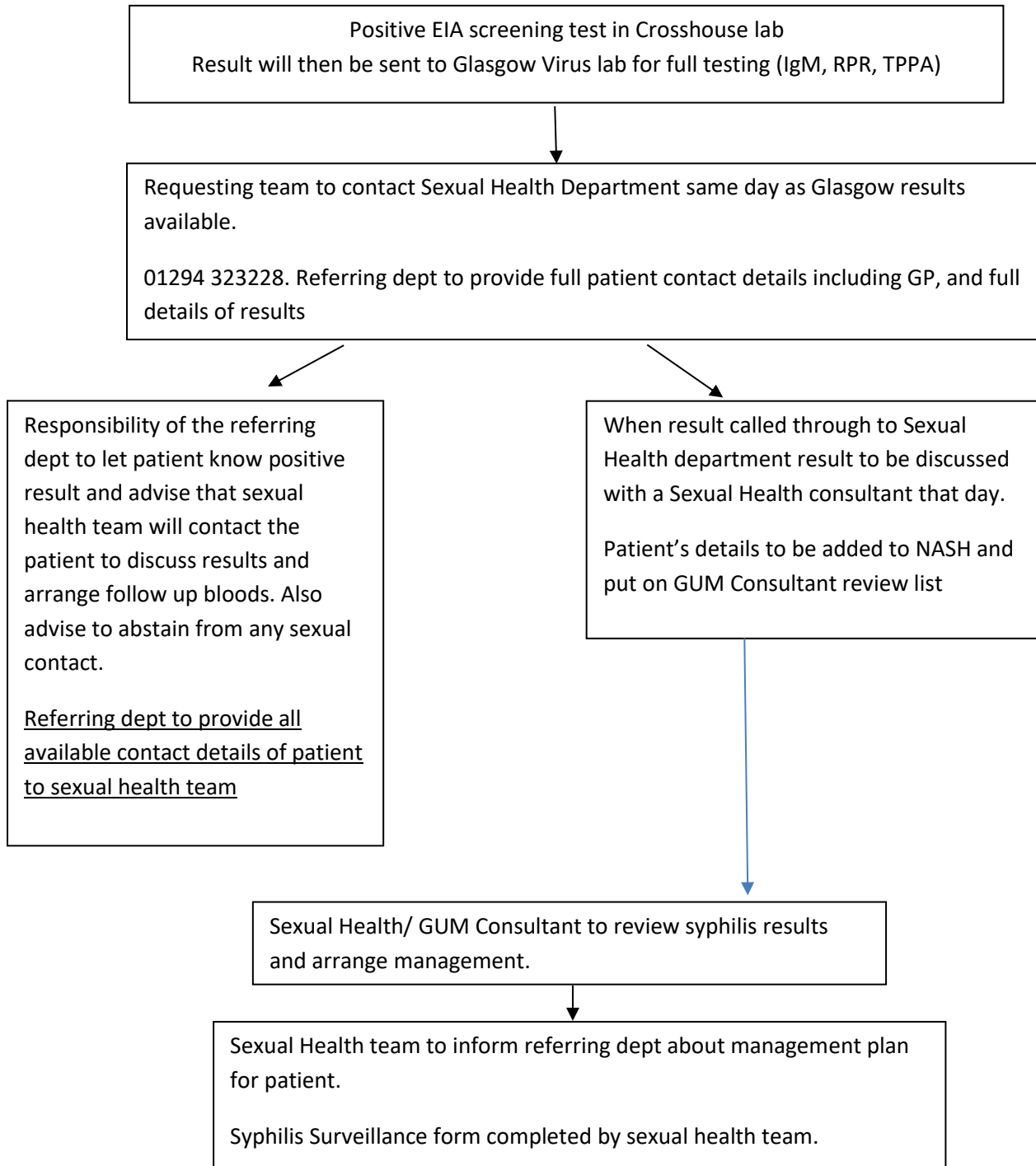


Care Pathway for People with a Positive Syphilis Result in Ayrshire

Consultant responsible for patient is responsible for seeing pathway is followed

If symptomatic of syphilis call Sexual Health Team ASAP



Useful Information

****BASHH guidelines**

UK national guidelines on the management of syphilis

https://www.bashh.org/resources/25/guidelines_syphilis_2015